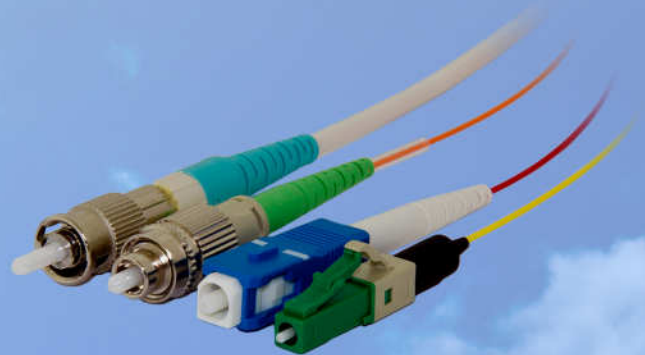


Lynx2

Lynx Splice-On Connectors

Fusion spliced field termination of fibres & cords

- FC, LC, SC and ST with options for boot length
- Factory polished ferrule with guaranteed parameters
- The protected splice is stored inside the connector body
- Splice-On Lynx2 using familiar processes and tools
- Easy field termination with 'factory made' quality
- Telcordia GR-326/GR-1081 and/or IEC 61754-4 compliant



Applications

Replace faulty connectors without removing the patch-cords

Simplify changes and repairs in high density ODFs

Repair pigtails without opening the splice cassette

Create custom length patch-cords in the field

Save space in small FTTH wall boxes



Specification

Fibre	SMF G652		MMF 50(OM2), 50(OM3) & 62.5		
Connector type	FC, LC, SC and ST				
Applicable fibre types	250um primary coating, 900um tight or semi-tight secondary & 900um loose buffer				
Applicable cord types	1.6mm, 2mm, 2.4mm & 3mm cord made with tight or semi-tight secondary coated fibre				
Short boot option?	On SC and LC 250/900 and 900LB versions * Note 1				
Insertion loss	Average 0.15dB Maximum 0.3dB		Average 0.1dB Maximum 0.25dB		
Tensile strength (straight pull)	250um type 0.5kgf, 900um tight buffer & loose buffer types 0.7kgf		2mm and 3mm cord types 6.8kgf		
Return loss (typ)	SM APC 65dB	SM-UPC ≥55dB	PC-M5(OM2) 30dB	PC-M5(OM3) 30dB	PC-M6 30dB
Housing or boot colour	Green		Black	Cyan	Grey

Lynx2 FC configurations

Lynx2	FCM	polish	fibre	coating
		PC ^{* Note 2}	SM	250/900
		UPC ^{* Note 3}	M5(OM2)	900LB
		APC ^{* Note 4}	M5(OM3)	2mm cord
			M6	3mm cord

Lynx2 LC configurations

Lynx2	LC	polish	fibre	coating	(option)
		PC ^{* Note 2}	SM	250/900	(SB) ^{* Note 6}
		UPC ^{* Note 3}	M5(OM2)	900LB	(SB) ^{* Note 6}
		APC ^{* Note 4}	M5(OM3)	2mm cord	
			M6	3mm cord	(DCL) ^{* Note 7}

Lynx2 SC configurations

Lynx2	SC	polish	fibre	coating	(option)
		PC ^{* Note 2}	SM	250/900	(SB) ^{* Note 6}
		UPC ^{* Note 3}	M5(OM2)	900LB	(SB) ^{* Note 6}
		APC ^{* Note 4}	M5(OM3)	2mm cord	
			M6	3mm cord	

Lynx2 ST configurations

Lynx2	ST ^{* Note 8}	polish	fibre	coating
		PC ^{* Note 2}	SM	250/900
		UPC ^{* Note 3}	M5(OM2)	900LB
			M5(OM3)	2mm cord
			M6	3mm cord

Lynx2 fibre holders

Fibre side - left

- FHS-025 holder for 250um primary coated fibre
- FHS-09 for 900um tight or semi-tight buffer secondary coated fibre
- FHS-025LB5 for 900um loose buffer secondary coated fibre
- Lynx2-UML-S metal holder for cord with 900um tight or semi-tight buffer fibre

Ferrule side - right

- Lynx2-UML-C metal holder for FC, LC, SC or ST ferrule
- Lynx2-C plastic holder for FC, LC, SC or ST ferrule

Notes

Note 1: Lynx connectors with the 'short boot' are IEC 61754-4 compliant but not Telcordia GR326/GR1081 compliant

Note 2: PC polish is available only on M5(OM2), M5(OM3) and M6(OM1) fibre types

Note 3: UPC polish is available only on SM fibre type

Note 4: APC polish is available only on SM fibre type

Note 5: To use Lynx2-LC with >2mm diameter cord in duplex pairs order LYNX2-DUPLEX-LC-CLIP part number TC007PD0191-00 bag of 10 duplex clips for Lynx2-LC. See also Note 7 below.

Note 6: (SB) denotes the 'short boot' option. Lynx2 connectors with this option comply with IEC 61754-4 but not with Telcordia GR326/1081

Note 7: (DCL) denotes 'duplex clip' version for >2mm diameter cord. Duplex clips must be ordered separately, see Note 5

Note 8: Lynx2-ST requires use of the LYNX2-ST-ASSEMBLY-TOOL part number TC007PD0192-00 which must be ordered separately